

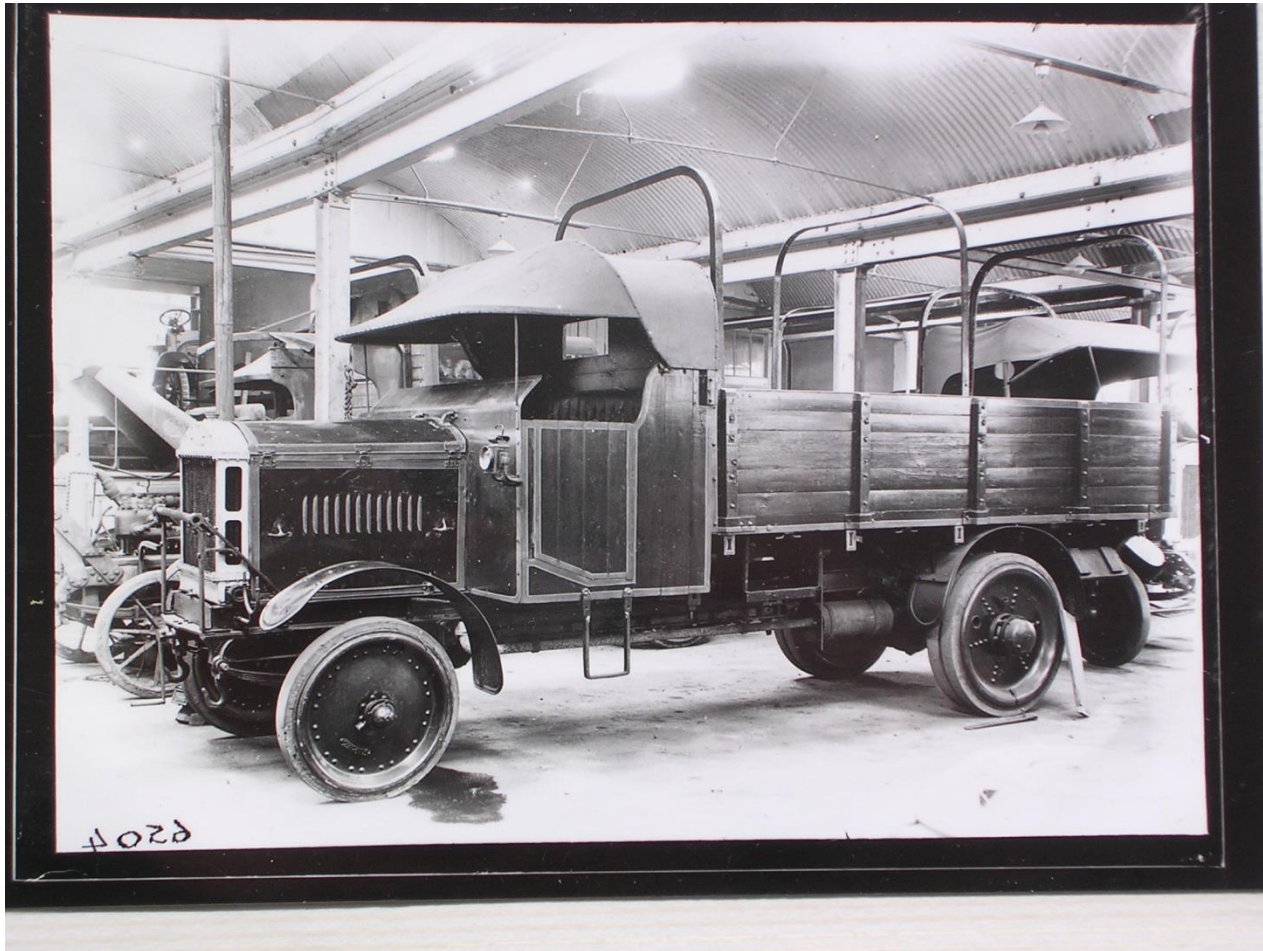
# Maudslay project

Coventry Transport Museum

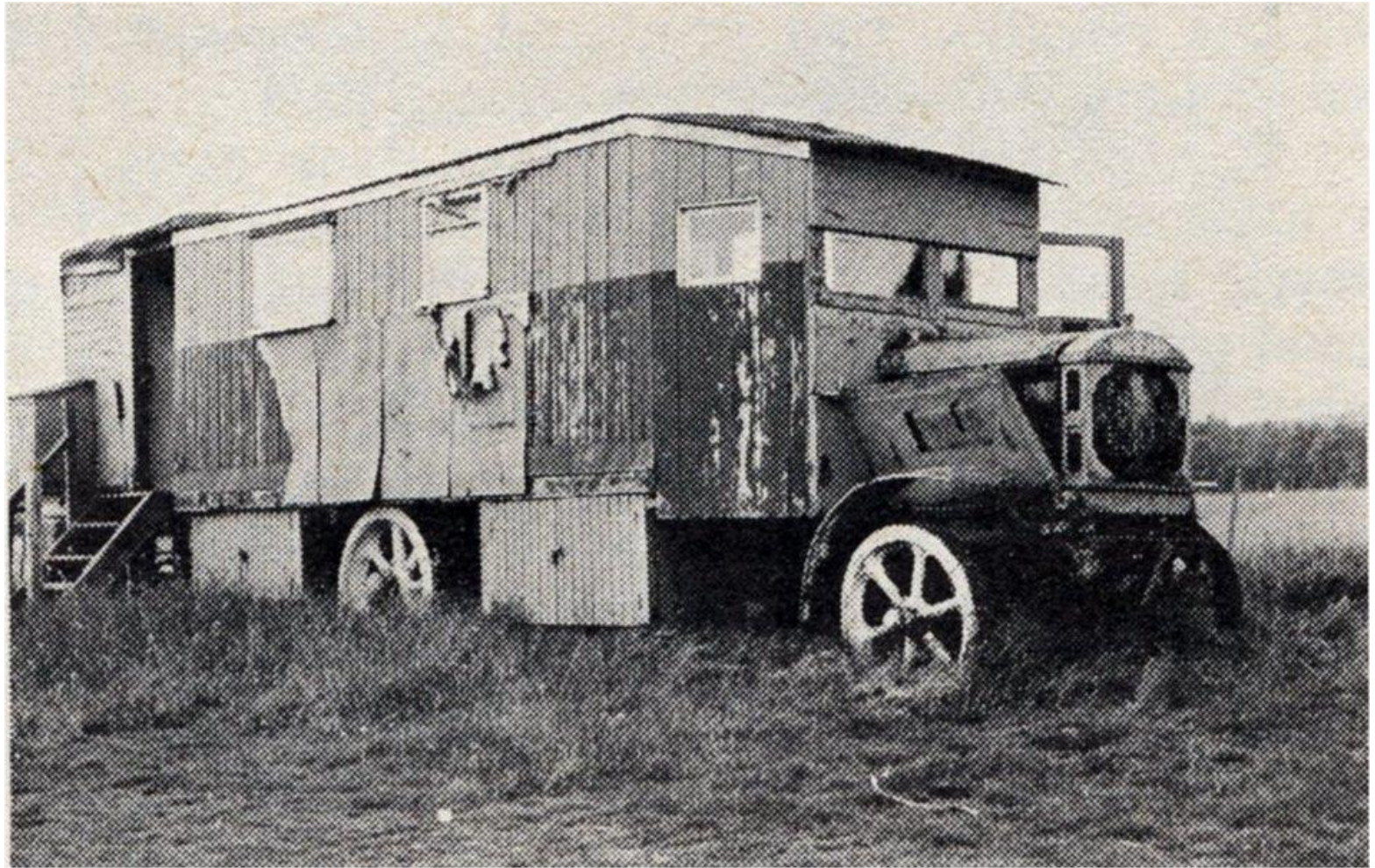
# Frontline Maudslays



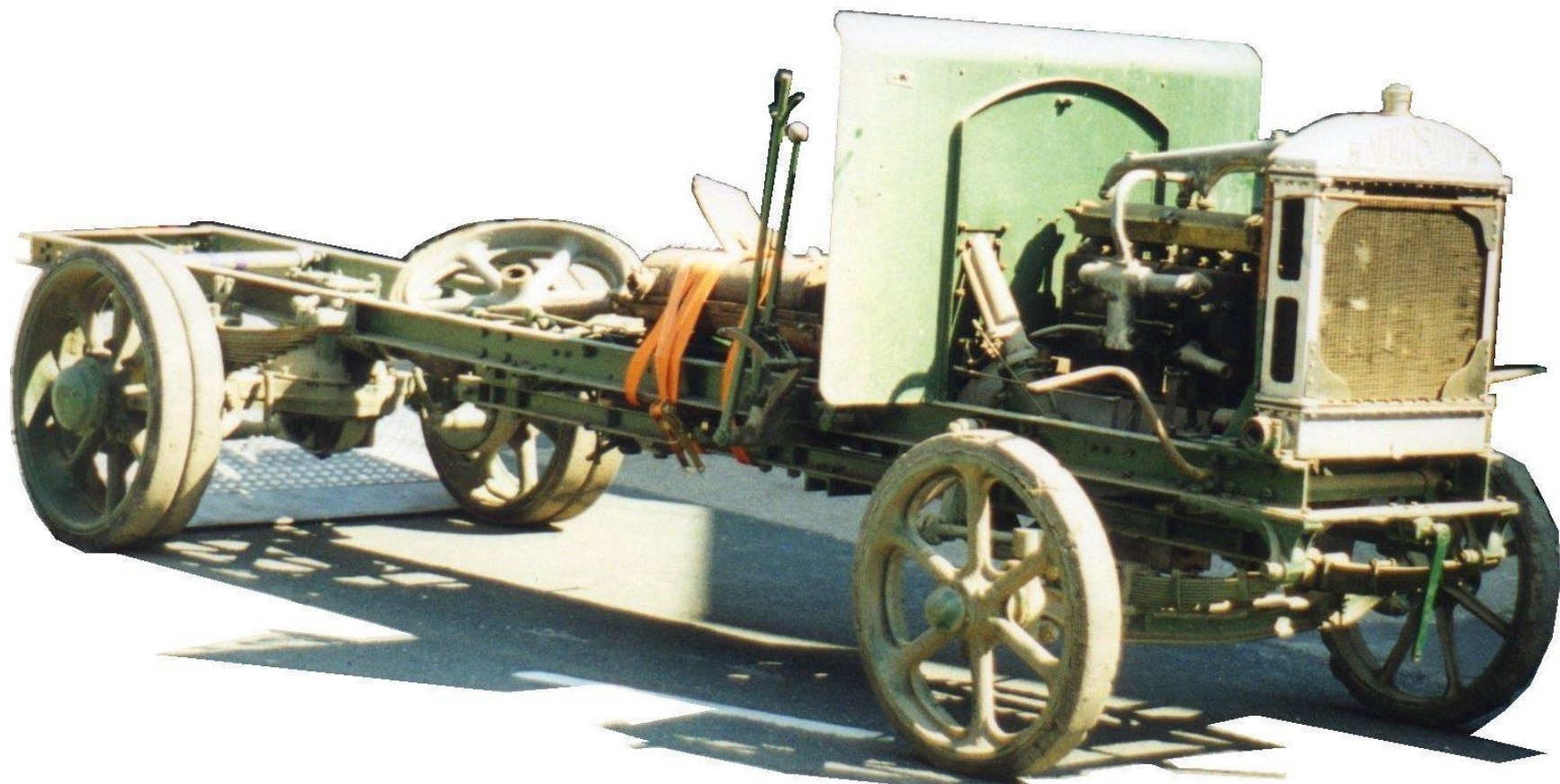
# Civilian conversion



# Holiday 'home' in Scotland



On arrival at the museum in 2001



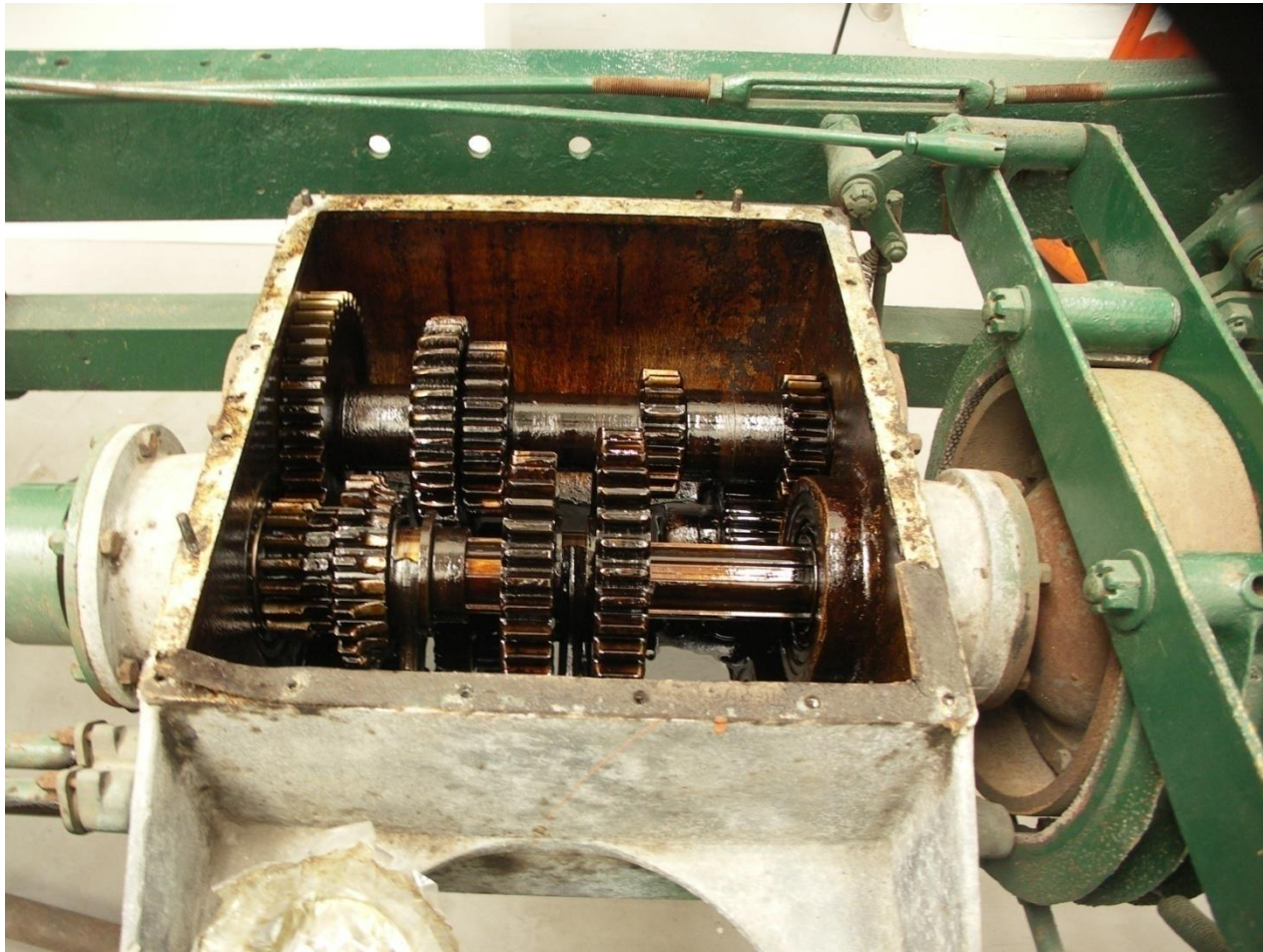
# Straightening of the chassis



# Engine removal

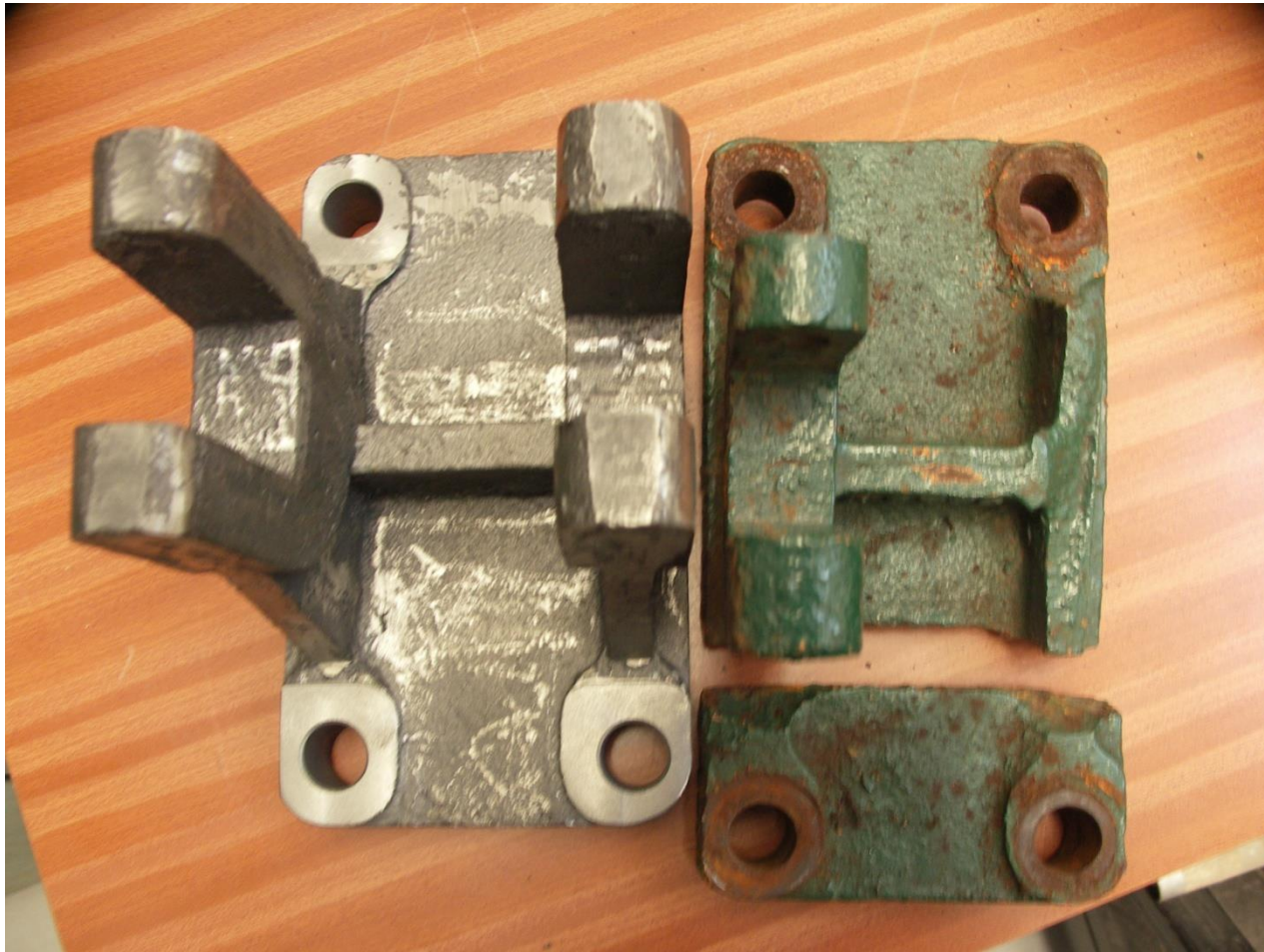


# Gearbox





# New casting made



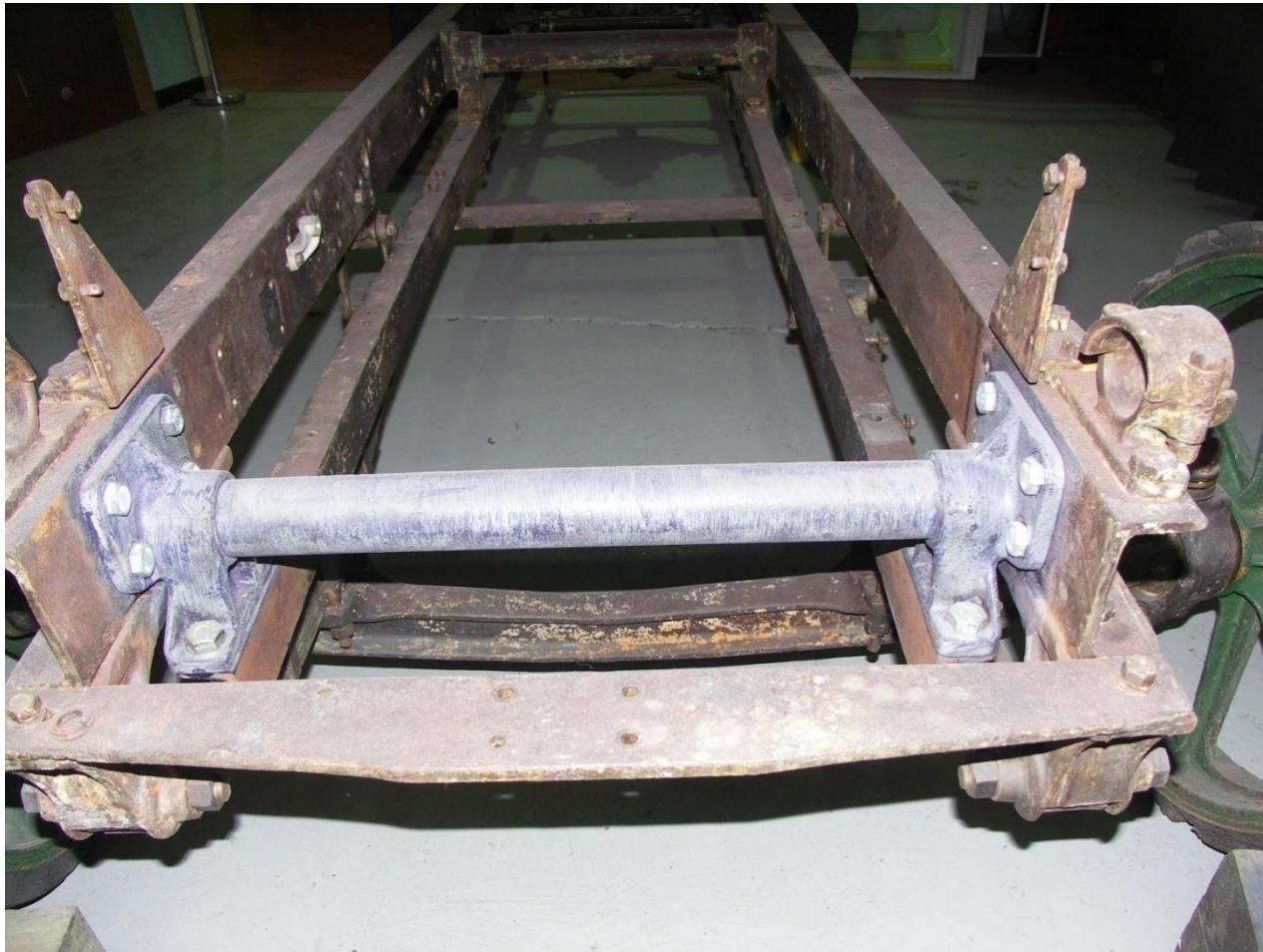
# Dry Ice blasting



# Chassis being painted



# Nuts and bolts



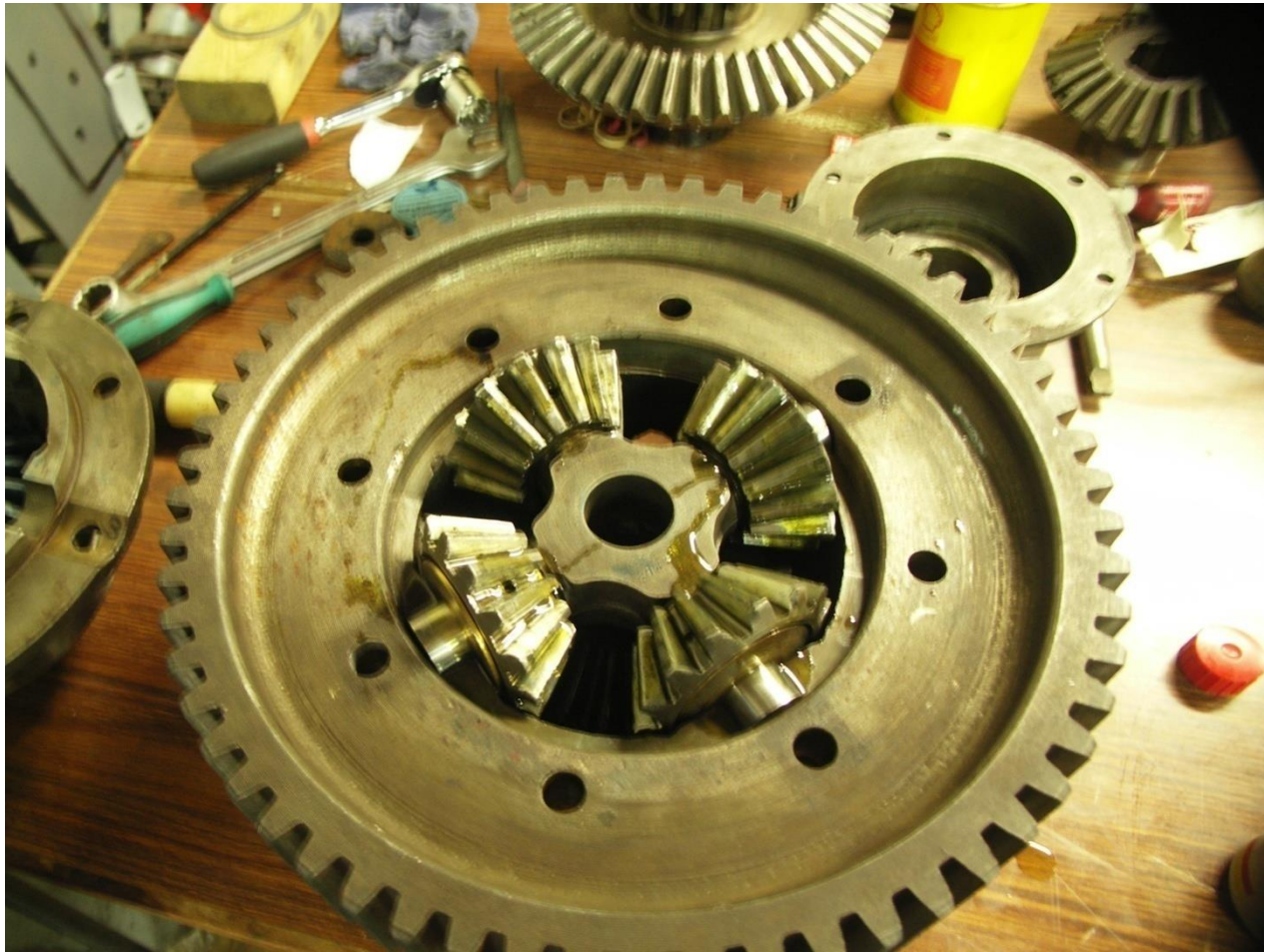
# Back axle



# Axle assembly



# Differential



# Crown wheel and pinion





# Pinion assembly



# Rear shackle pins



# Back axle studs



# Rear brakes



# Old rubber removed



# Tyre pressed onto wheel



# Research



# Rubber crafted on





# Machining



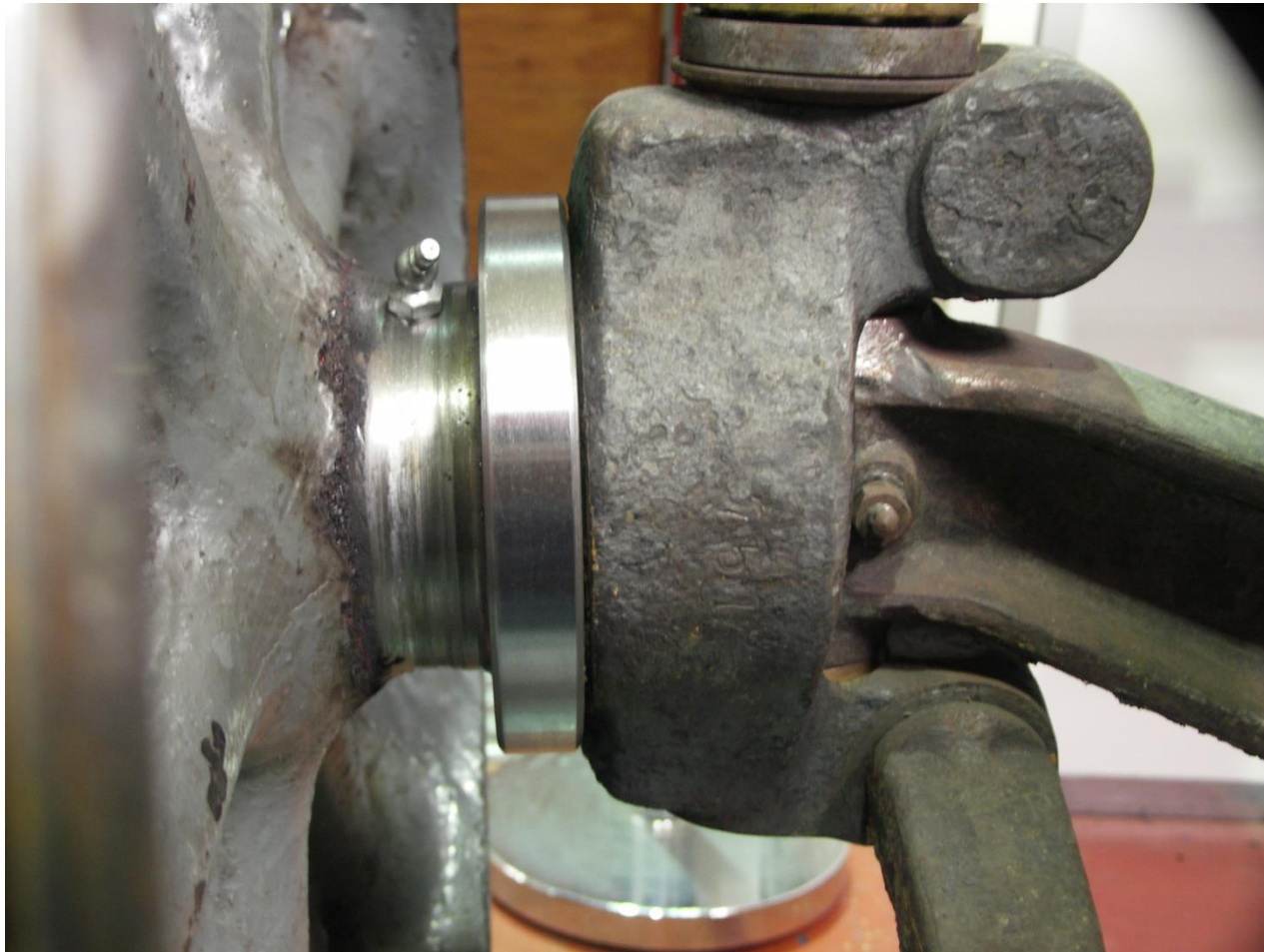
# Front wheel



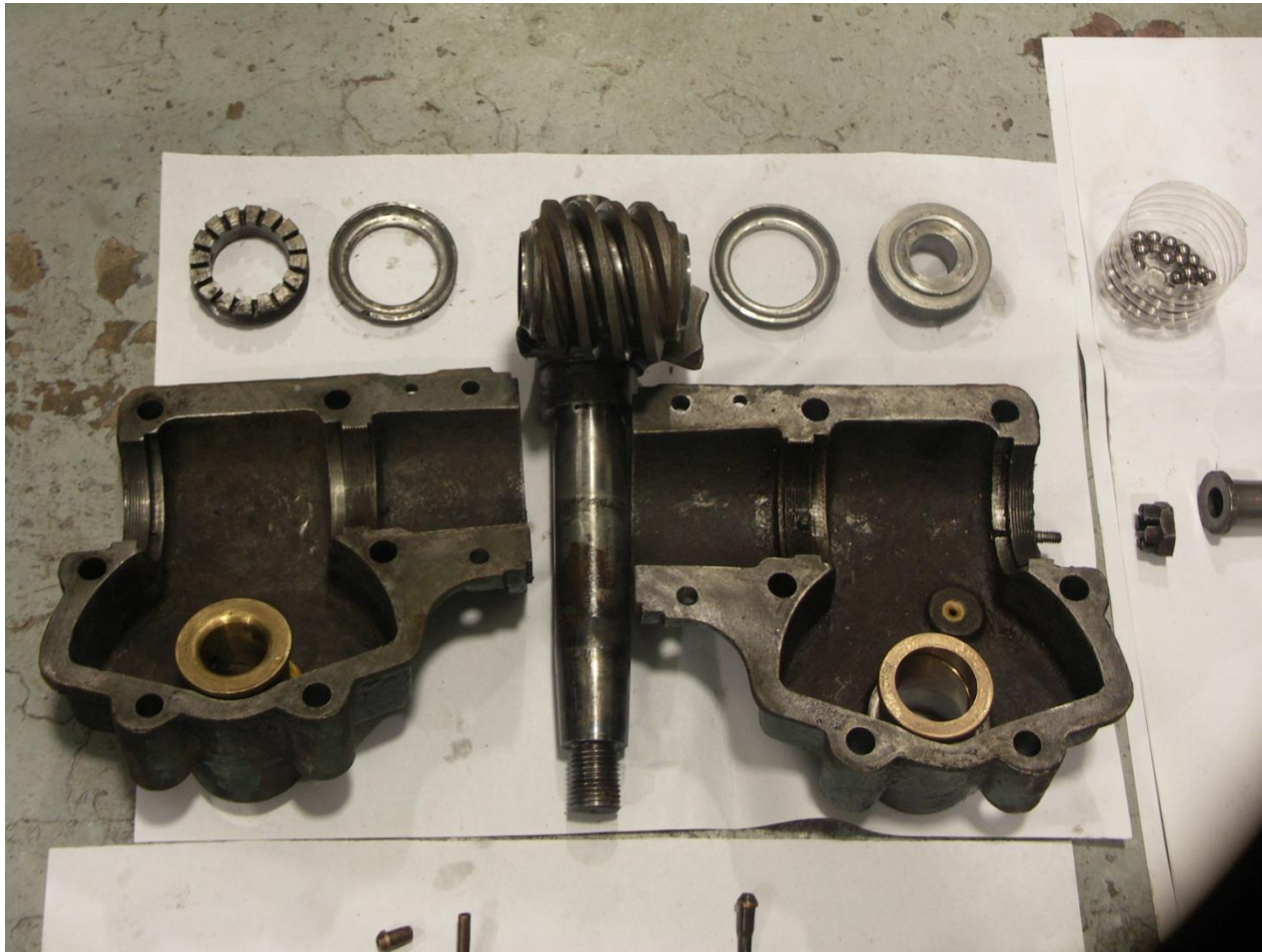
# 'Donor' wheel



# New flange



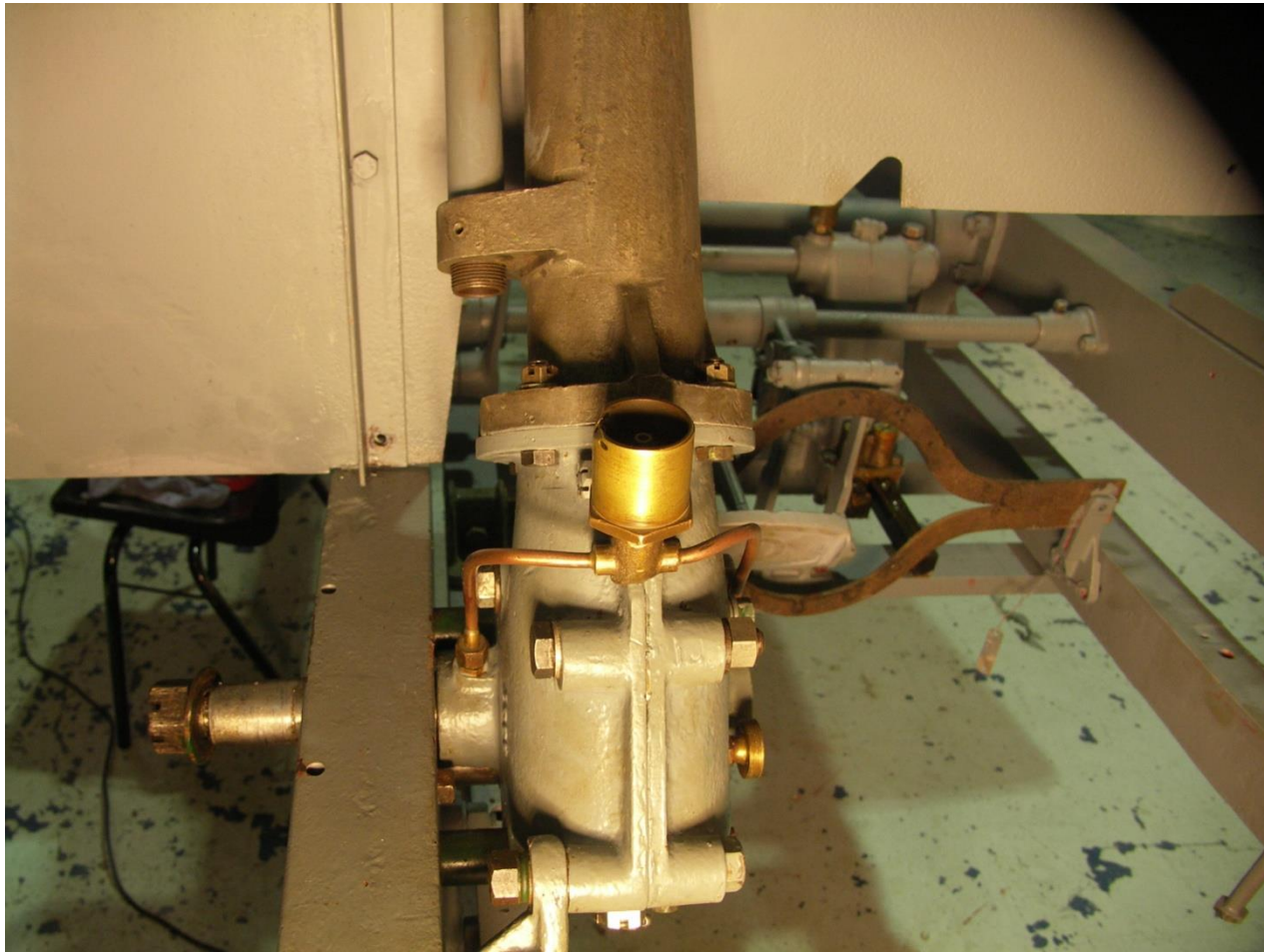
# Steering box



# Ball joint



# Finished article



# Parts for blasting





# Bulkhead and steering column



# Steering column installed



# Gearbox being assembled



# Roger Painting our chassis



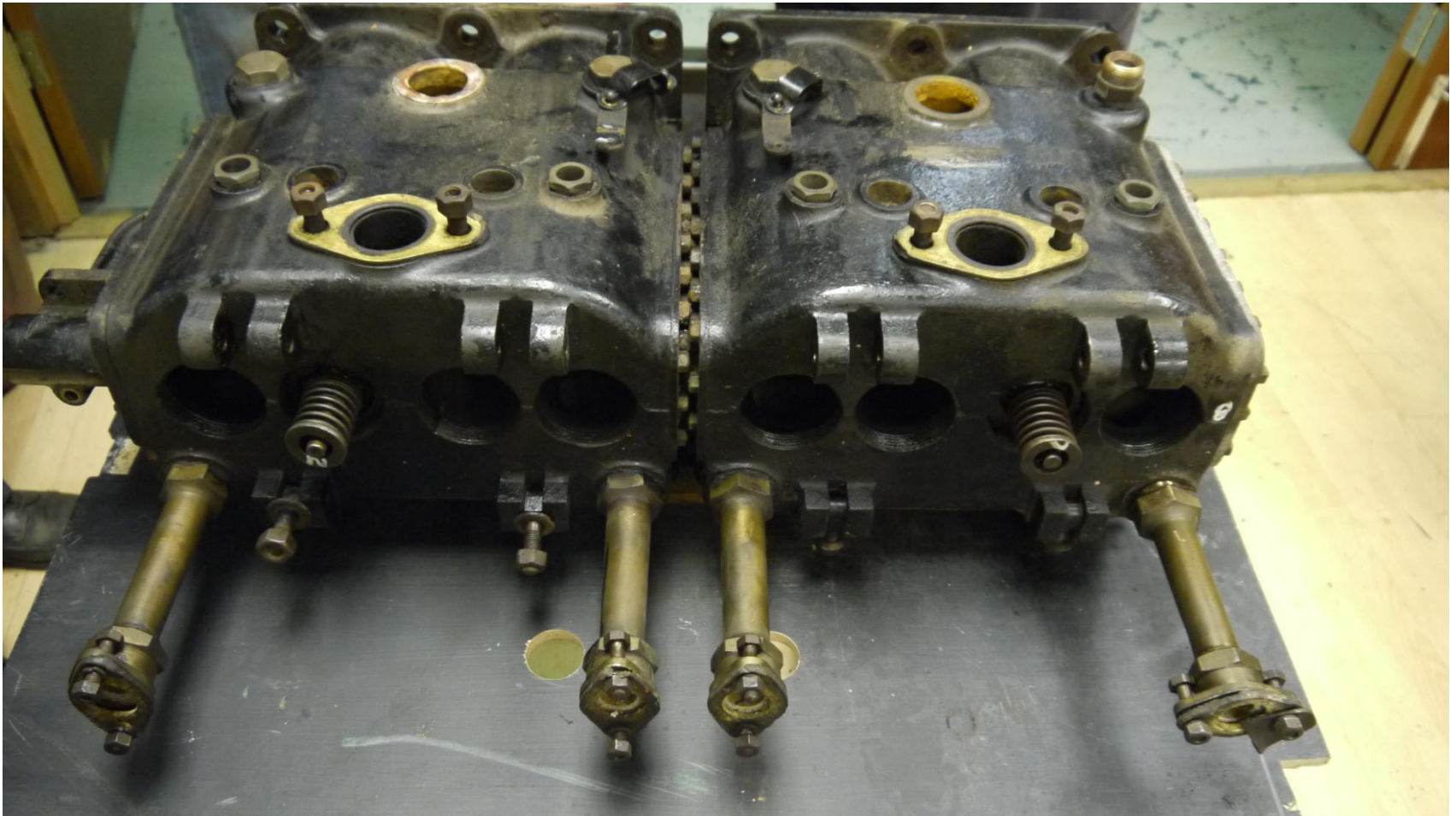
# Roger at rest



# Cylinder block being removed



# Cylinder block removed

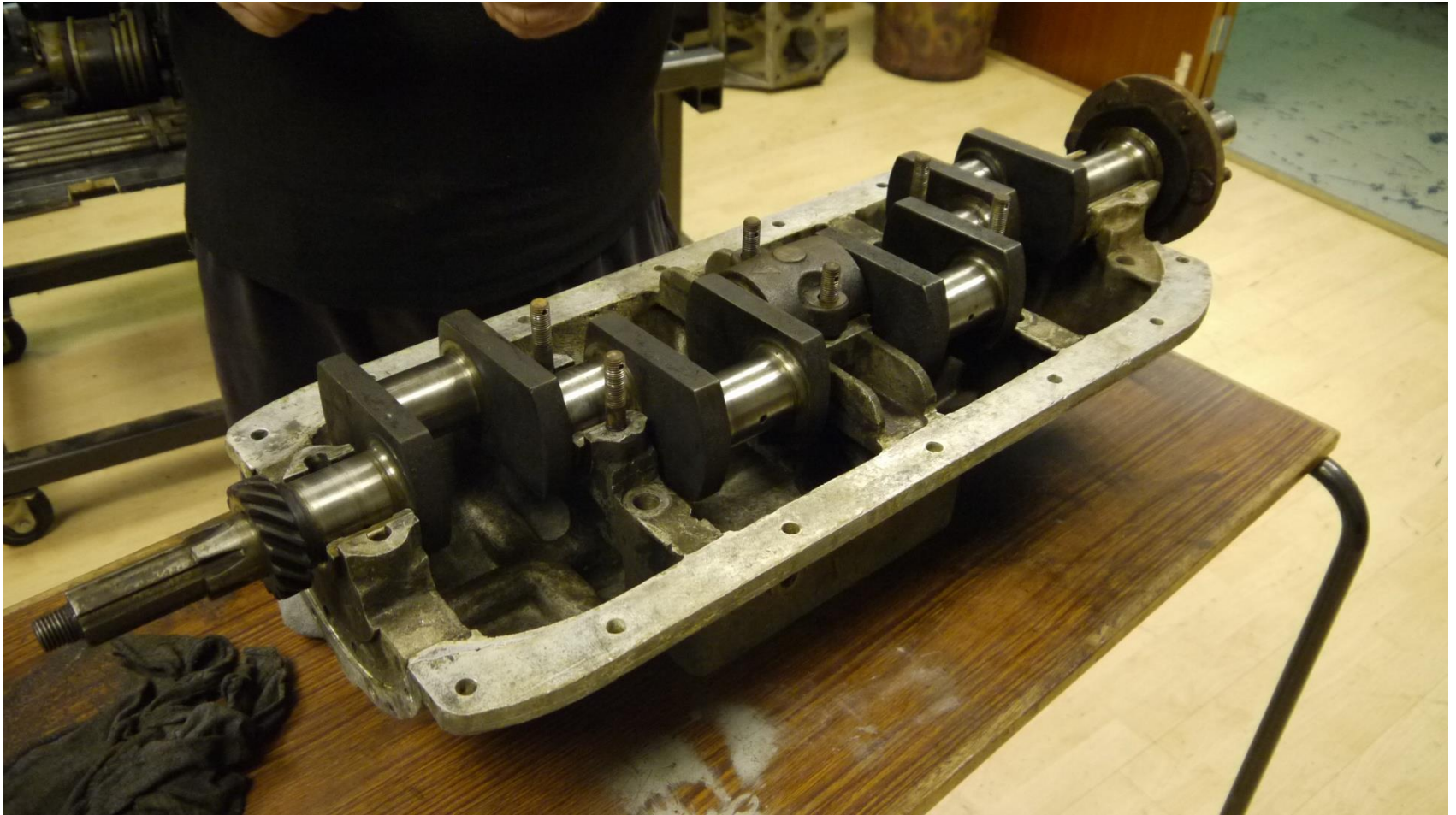


# Team being bored

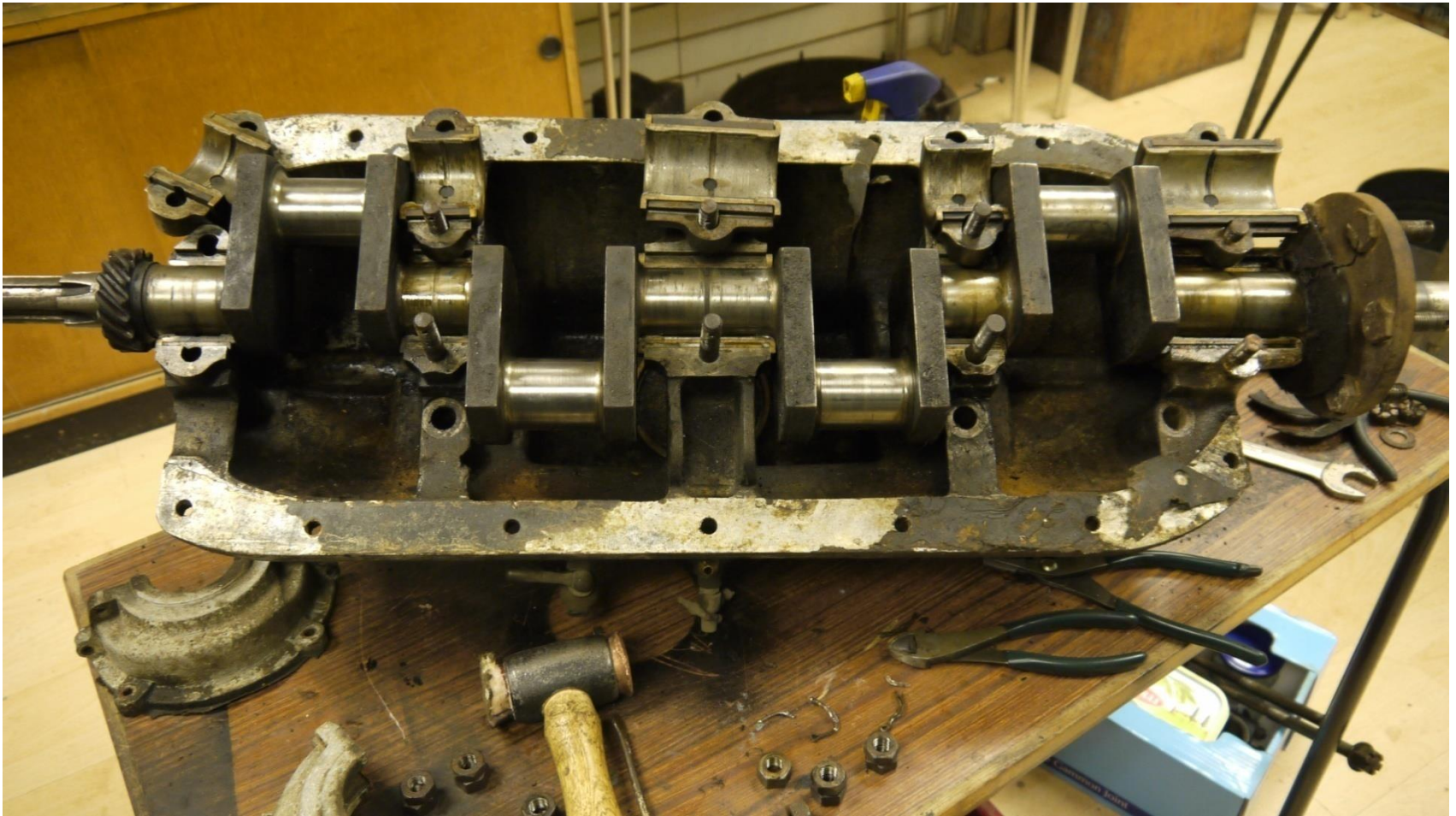




# Crank and crank case



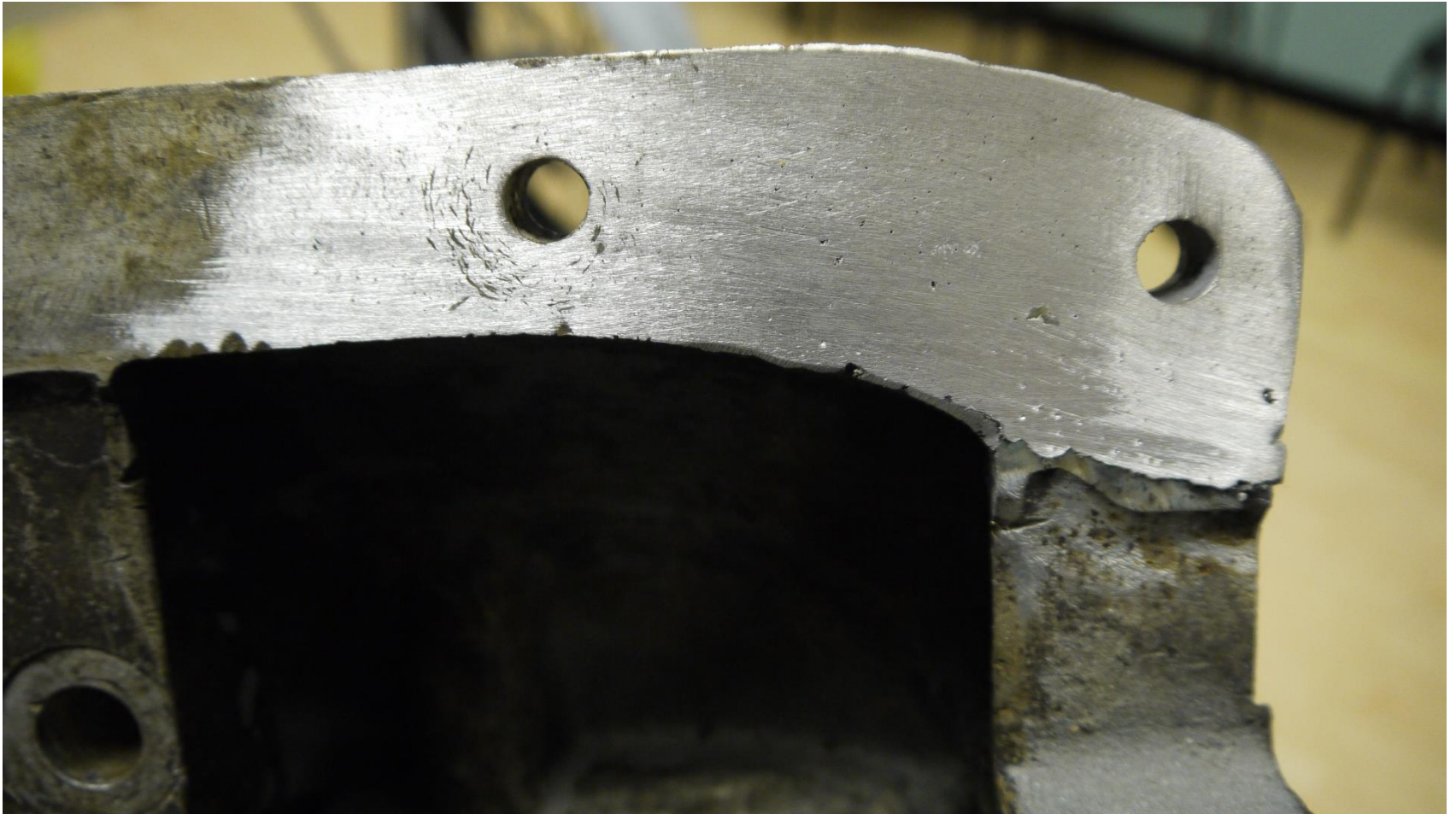
# Crank and sump



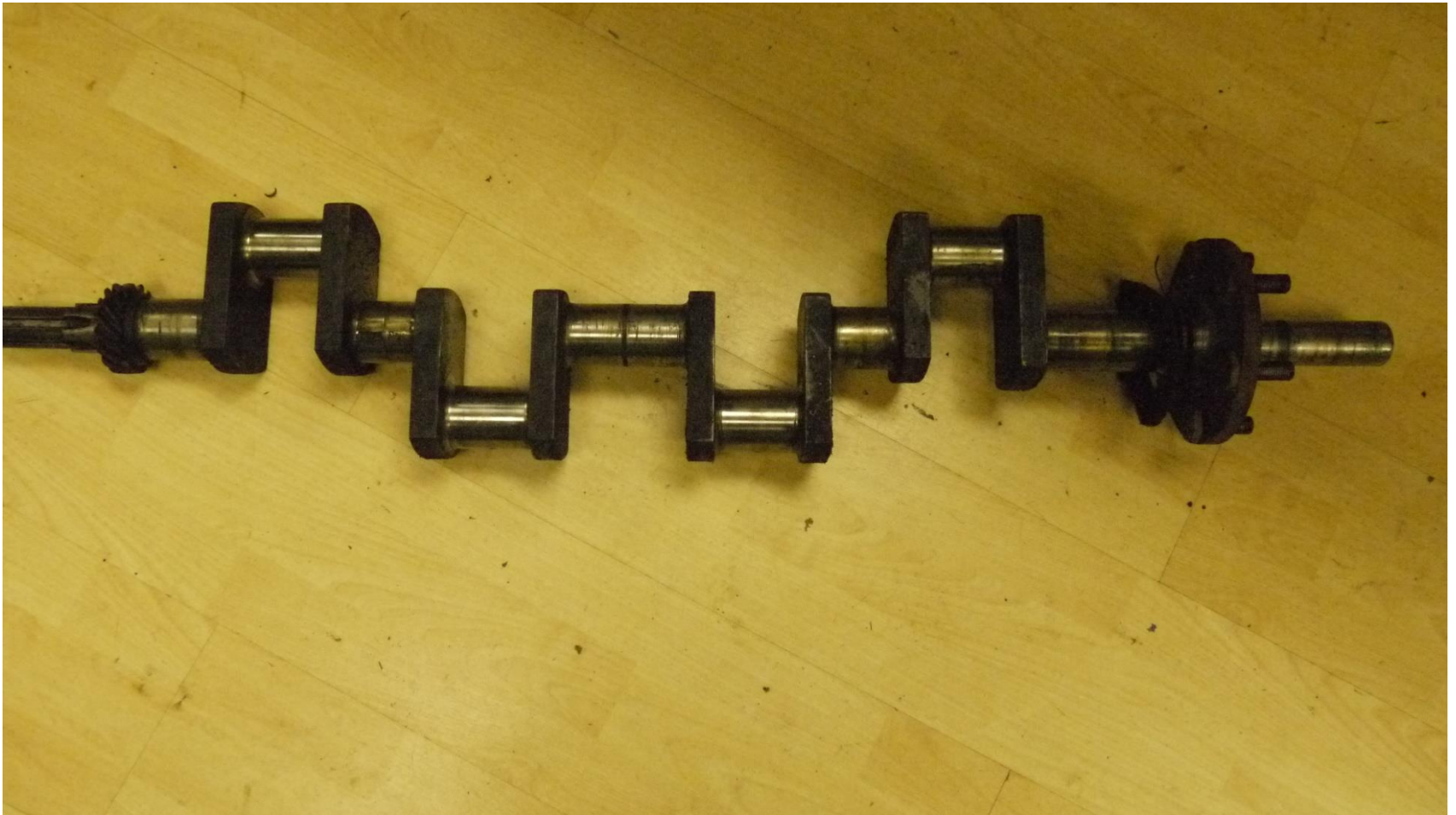
# Condition of piston



# Repair to sump



# Crankshaft



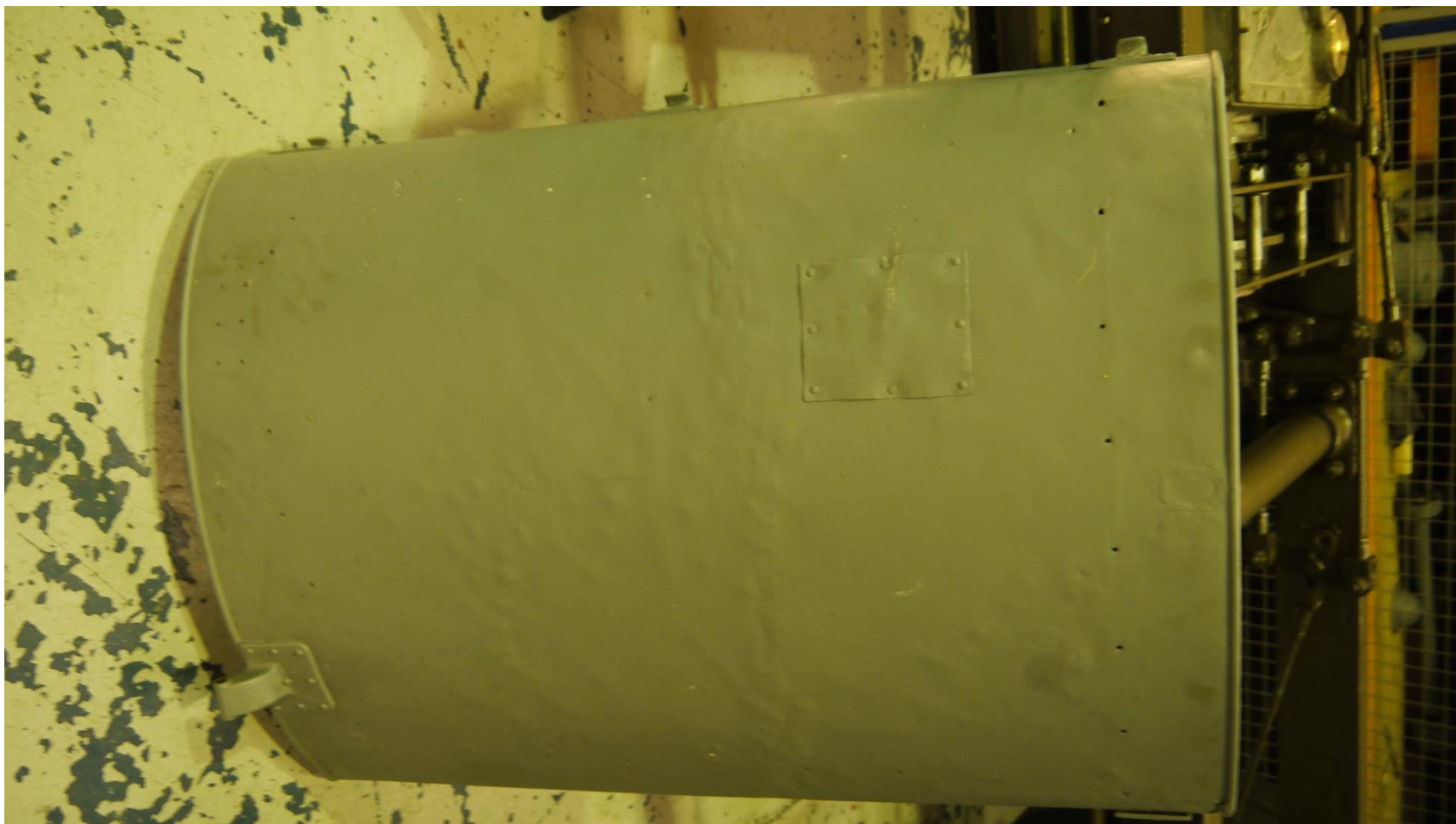
# Valves and tool



# Side panel

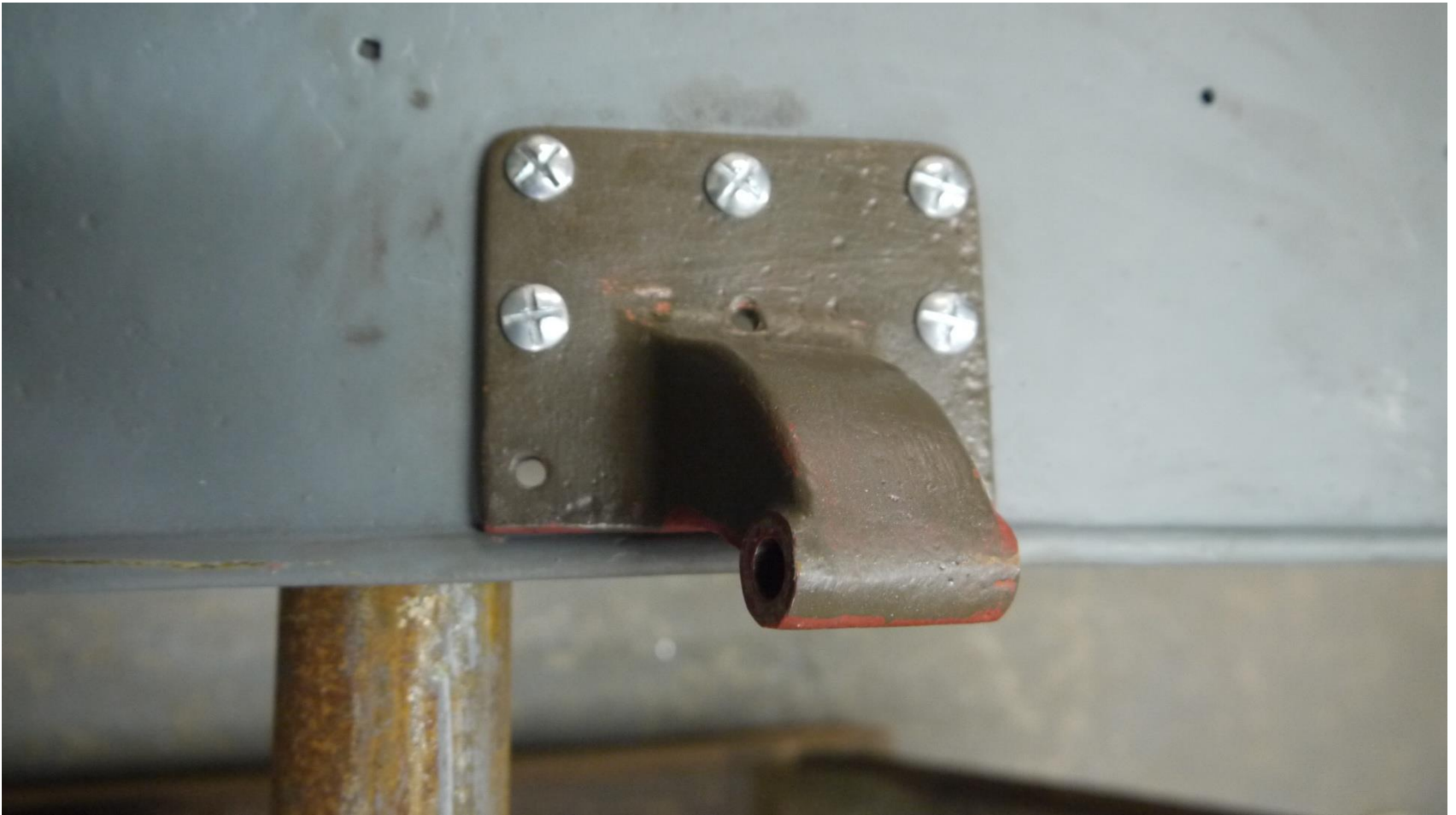


# Bonnet





# Bonnet repair



# Bonnet



# Bonnet catches



# Seat box construction



# Seat box



# Chassis November 2013



# Seat box test fit

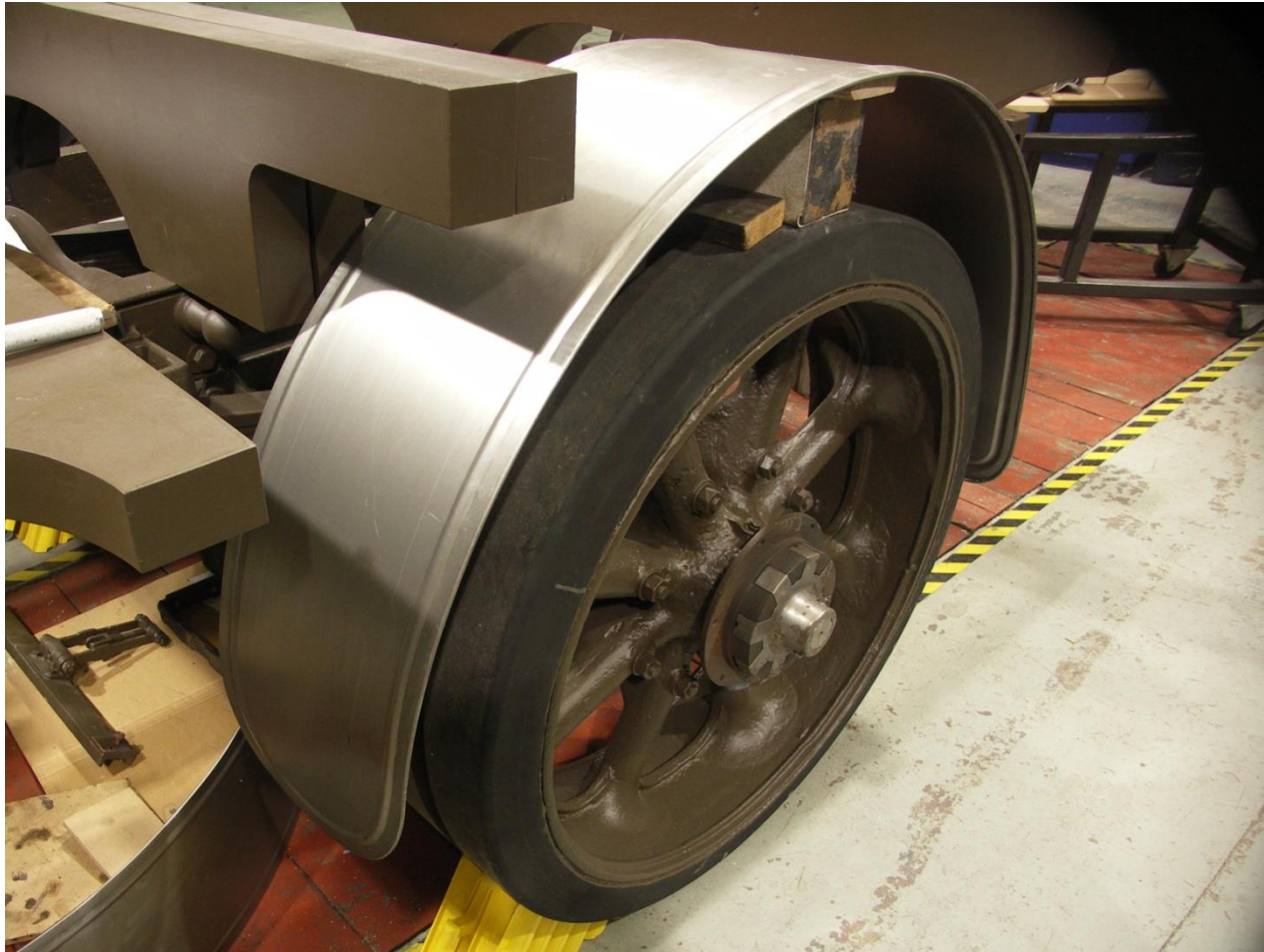


# Steering wheel made by Steve Gosling





# New mudguards



# Engine installed



# Drive shafts installed



# Petrol tank



# Body fitted





# Events team



# Line-up at Shuttlesworth





# Starting the Maudslay



# In Transit support



# Team Maudslay 2010-2014



# Re-enactment at Leamington



# Team Maudslay 1914-1918

